

#131949

COUNTY RECORDER'S CERTIFICATE

STATE OF IDAHO } S.S.
COUNTY OF LEMHI }

This is to certify that the foregoing plat was filed in the Office of the Recorder of Lemhi County, Idaho on this 29th day of Jan. 1976 at 9:58 A.M. and duly recorded in Plat Book 4 at Page 51-1

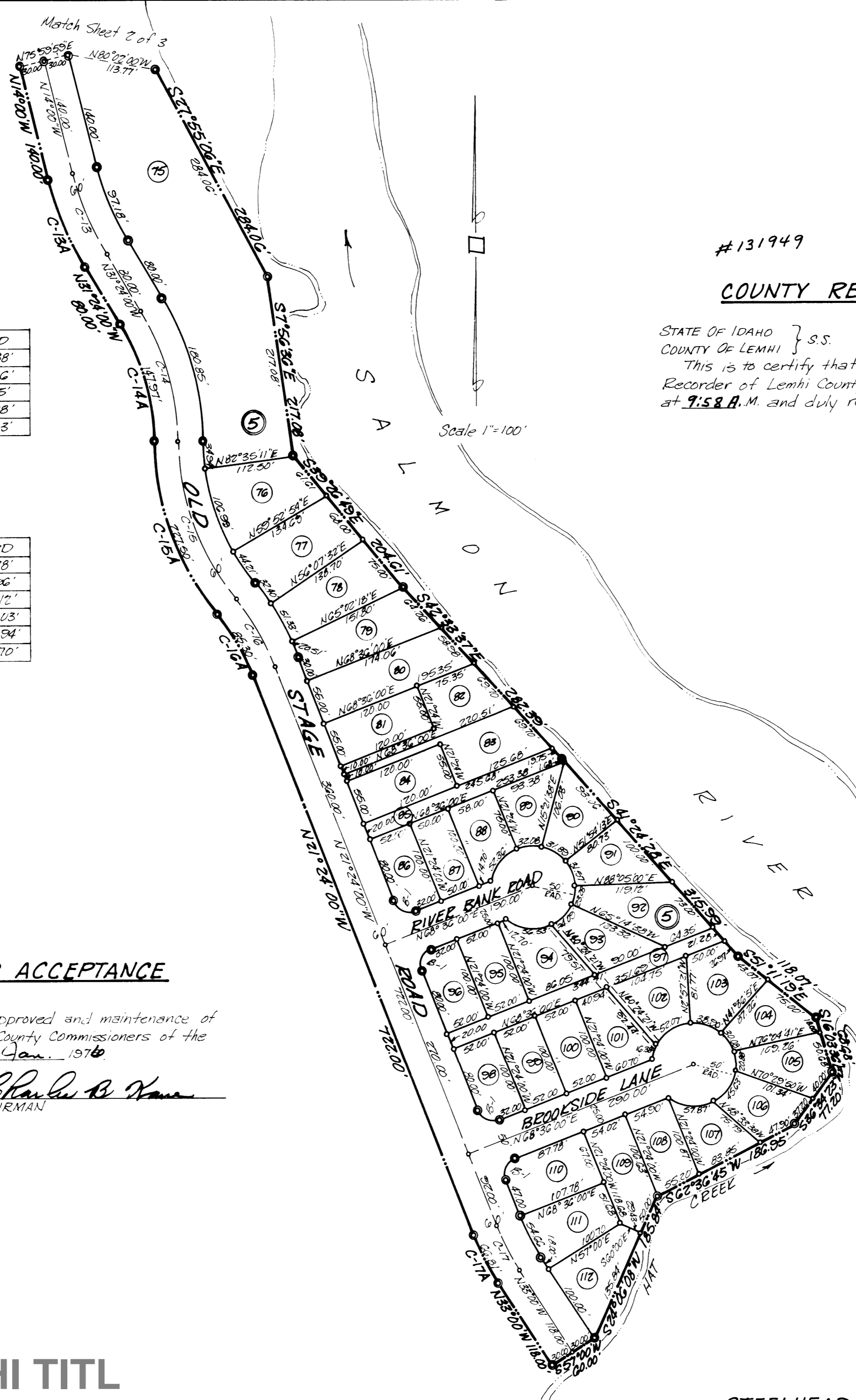
Ethanas Aldous
EX-OFFICIO RECORDER

CENTERLINE CURVE DATA

CURVE	RADIUS	Δ	TANGENT	LENGTH	CHORD
C-13	350.00'	17°24'00"	53.56'	106.29'	105.88'
C-14	300.00'	31°24'00"	84.38'	164.41'	162.36'
C-15	300.00'	39°30'00"	107.71'	206.82'	202.75'
C-16	300.00'	18°06'00"	47.78'	94.77'	94.38'
C-17	300.00'	11°36'00"	30.47'	60.74'	60.63'

CURVE DATA

CURVE	RADIUS	Δ	TANGENT	LENGTH	CHORD
B-1	20.00'	90°00'00"	20.00'	31.42'	28.28'
C-13A	380.00'	17°24'00"	58.15'	116.40'	114.96'
C-14A	270.00'	31°24'00"	75.85'	147.97'	146.12'
C-15A	330.00'	39°30'00"	118.48'	227.50'	223.03'
C-16A	270.00'	18°06'00"	43.01'	85.30'	84.94'
C-17A	330.00'	11°36'00"	33.52'	66.81'	66.70'



LEGEND

- 5/8" x 30" Steel Bar set on Boundary and Black Corners
- 1/2" x 24" Steel Bar set on Lot Corners
- Boundary Line
- Lot Line
- - - Utility Easement - 5' wide
- ④ Lot Number
- ⑤ Block Number

COUNTY COMMISSIONER'S ACCEPTANCE

The foregoing plat was duly accepted and approved and maintenance of all public streets was accepted by the Board of County Commissioners of the County of Lemhi, Idaho on this 12 day of Jan. 1976

Ethanas Aldous
ATTEST: CLERK

Charles B. Kane
CHAIRMAN

johnston · couch
engineers · surveyors
salmon · idaho

COURTESY LEMHI TITL