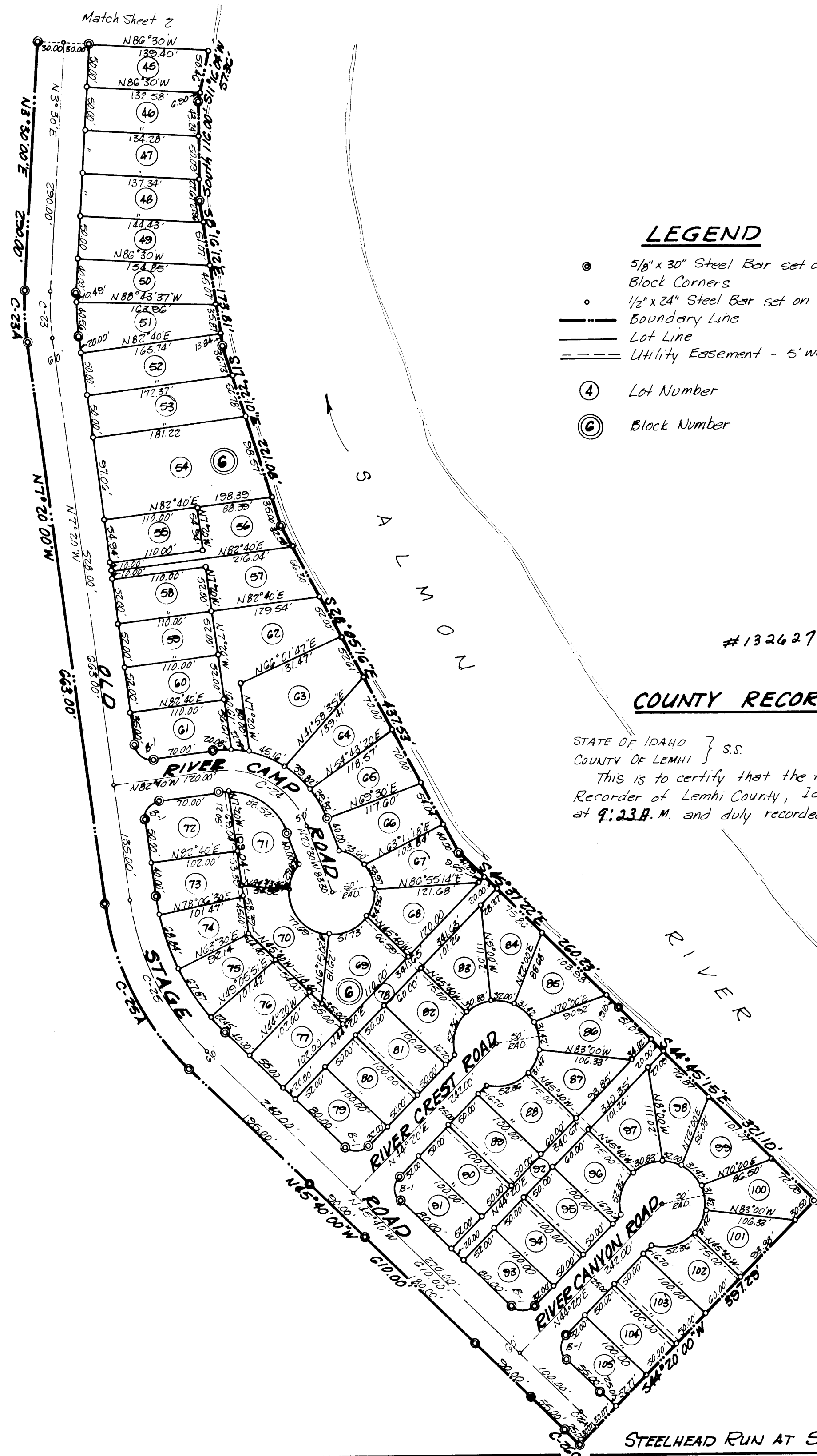


CENTERLINE CURVE DATA

CURVE	RADIUS	Δ	TANGENT	LENGTH	CHORD
C-23	300.00'	10°50'00"	28.45'	56.72'	56.64'
C-24	100.00'	70°50'00"	79.31'	134.10'	124.28'
C-25	300.00'	38°20'00"	104.78'	200.71'	190.99'
C-26A	370.00'	3°34'59"	11.57'	23.14'	23.13'

CURVE DATA

CURVE	RADIUS	Δ	TANGENT	LENGTH	CHORD
C-23A	330.00'	10°50'00"	31.29'	62.40'	62.30'
C-25A	330.00'	38°20'00"	114.70'	220.78'	210.69'
C-26C	340.00'	4°13'00"	12.52'	25.02'	25.02'



LEGEND

- 5/8" x 30" Steel Bar set on Boundary and Block Corners
- 1/2" x 24" Steel Bar set on Lot Corners
- Boundary Line
- - - Lot Line
- - - Utility Easement - 5' wide
- ④ Lot Number
- Ⓢ Block Number

Scale 1" = 100'

#132627

COUNTY RECORDER'S CERTIFICATE

STATE OF IDAHO } S.S.
 COUNTY OF LEMHI }
 This is to certify that the foregoing plot was filed in the Office of the Recorder of Lemhi County, Idaho on this 13th day of May, 1976, at 9:23 A.M. and duly recorded in Plot Book 4 at Page 54-2

Eleanor Aldous
 EX-OFFICIO RECORDER

COUNTY COMMISSIONER'S ACCEPTANCE

The foregoing plot was duly accepted and approved and maintenance of all public streets was accepted by the Board of County Commissioners of the County of Lemhi, Idaho on this 12th day of April, 1976.

Eleanor Aldous
 ATTEST: CLERK

Charles B. Kane
 CHAIRMAN

johnston · couch
 engineers · surveyors
 salmon · idaho

COURTESY LEMHI TITL

STEELHEAD RUN AT SALMON RIVER THIRD ADDITION

Sheet 3 of 3