

132629

COUNTY RECORDERS CERTIFICATE

STATE OF IDAHO }
 COUNTY OF LEMHI } ss.
 This is to certify that the foregoing plat was filed in the Office of the Recorder of Lemhi County, Idaho on this 13th day of May, 1976, at 7:25 A.M. and duly recorded in Plat Book 4 at Page 55-1

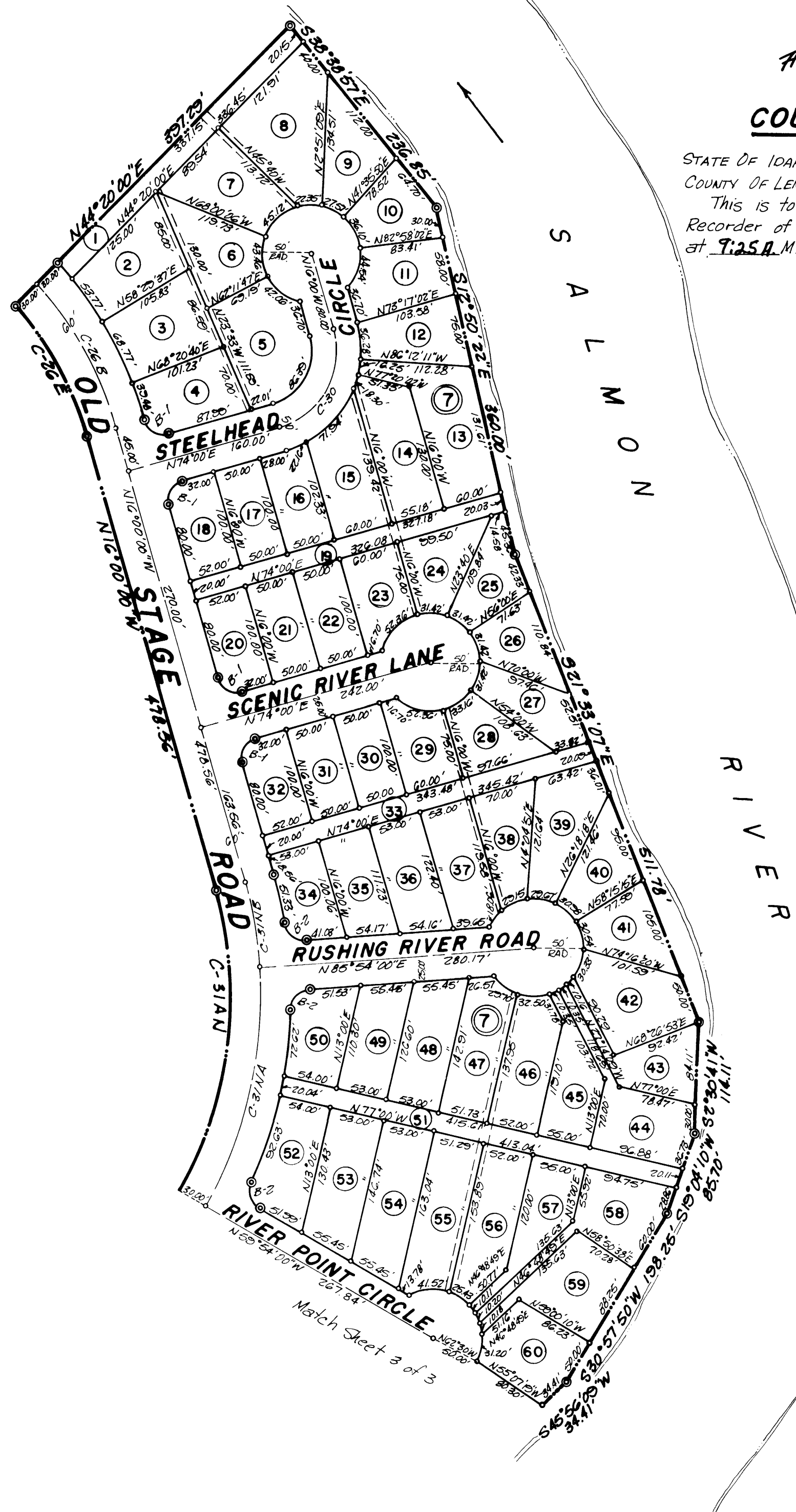
Eleanor Aldous
 EX-OFFICIO RECORDER

CENTERLINE CURVE DATA

CURVE	RADIUS	Δ	TANGENT	LENGTH	CHORD
C-26B	370.00'	29°40'00"	97.99'	191.58'	180.45'
C-30	80.00'	90°00'00"	80.00'	125.66'	113.14'
C-31NA	425.00'	34°12'00"	130.75'	253.68'	249.93'
C-31NB	425.00'	11°54'00"	44.29'	88.27'	88.11'

CURVE DATA

CURVE	RADIUS	Δ	TANGENT	LENGTH	CHORD
B-1	20.00'	90°00'00"	20.00'	31.42'	28.28'
B-2	20.00'	84°33'50"	18.19'	29.52'	26.91'
C-26E	340.00'	25°27'00"	76.78'	151.02'	149.78'
C-31AN	395.00'	46°06'00"	108.07'	317.82'	309.31'



Scale 1" = 100'

LEGEND

- 5/8" x 30" Steel Bar set on Boundary and Block Corners
- 1/2" x 24" Steel Bar set on Lot Corners
- Boundary Line
- Lot Line
- ==== Utility Easement - 5' wide
- Ⓣ Lot Number
- Ⓡ Block Number

COUNTY COMMISSIONERS ACCEPTANCE

The foregoing plat was duly accepted and approved and maintenance of all public streets was accepted by the Board of County Commissioners of the County of Lemhi, Idaho on this 10th day of May, 1976.

Eleanor Aldous
 ATTEST: CLERK

Charles B. Kane
 CHAIRMAN

johnston · couch
 engineers · surveyors
 salmon · idaho

COURTESY LEMHI TITLE