

**CENTERLINE CURVE DATA**

CURVE	RADIUS	Δ	TANGENT	LENGTH	CHORD
C-31S	425.00'	16°54'00"	63.14'	125.36'	124.90'
C-32	150.00'	47°10'00"	65.48'	123.48'	120.02'
C-33	300.00'	43°10'00"	118.68'	226.02'	220.71'
C-34	300.00'	27°30'00"	73.41'	143.99'	142.61'

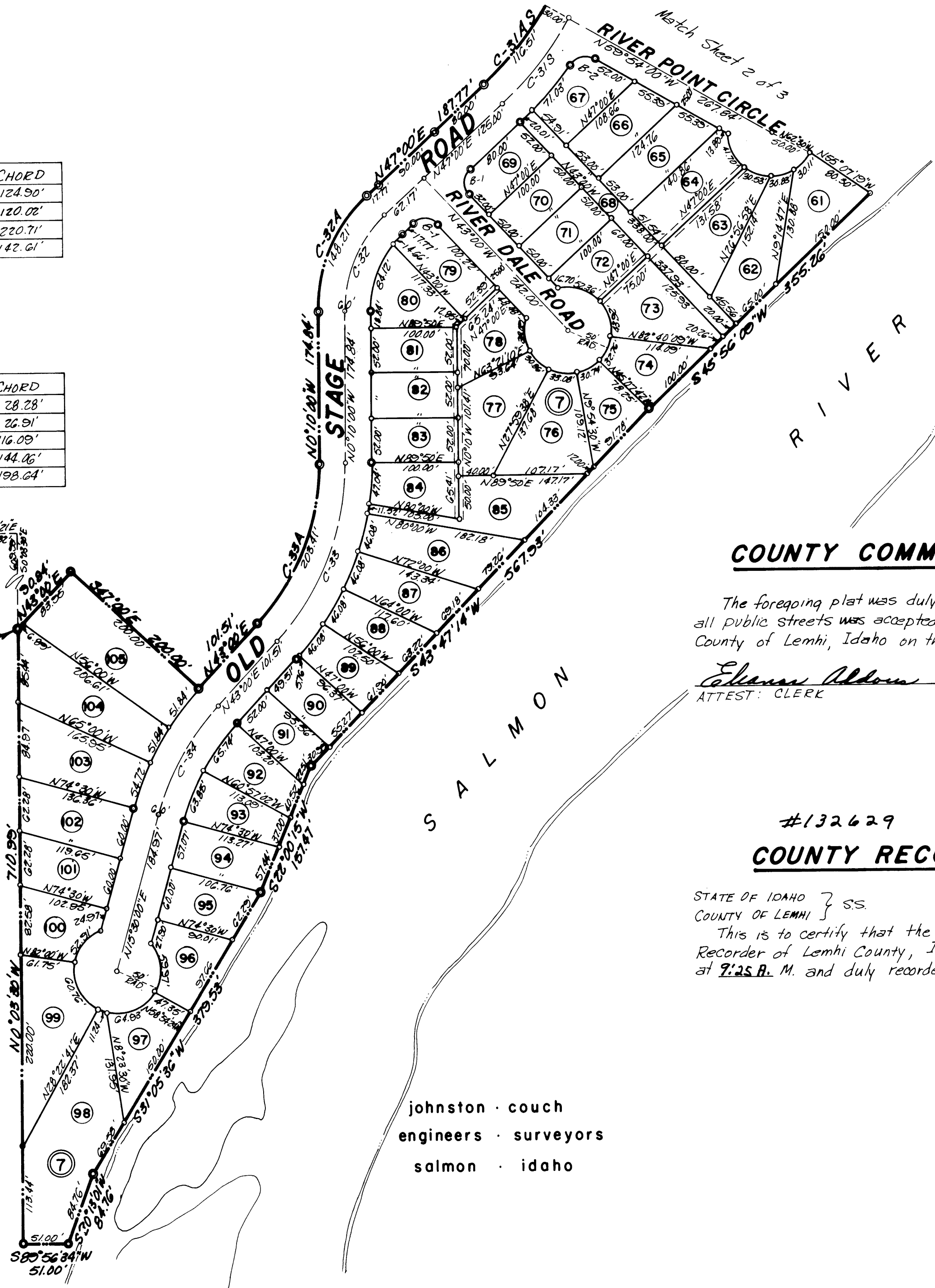
**CURVE DATA**

CURVE	RADIUS	Δ	TANGENT	LENGTH	CHORD
B-1	20.00'	90°00'00"	20.00'	31.42'	28.28'
B-2	20.00'	84°33'50"	18.19'	29.52'	26.91'
C-31AS	305.00'	16°54'00"	58.68'	116.51'	116.09'
C-32A	180.00'	47°10'36"	78.60'	148.21'	144.06'
C-33A	270.00'	43°09'55"	106.81'	203.41'	198.64'

REAL POINT OF BEGINNING

**LEGEND**

- 5/8" x 30" Steel Bar set on Boundary and Block Corners
- 1/2" x 24" Steel Bar set on Lot Corners
- Boundary Line
- - - Lot Line
- - - - Utility Easement - 5' wide
- ⑨ Lot Number
- ⑦ Block Number



**COUNTY COMMISSIONERS ACCEPTANCE**

The foregoing plat was duly accepted and approved and maintenance of all public streets was accepted by the Board of County Commissioners of the County of Lemhi, Idaho on this 10<sup>th</sup> day of May, 1976.

*Eleanor Aldous*  
ATTEST: CLERK

*Charles B. Kane*  
CHAIRMAN

#132629  
**COUNTY RECORDERS CERTIFICATE**

STATE OF IDAHO } ss.  
COUNTY OF LEMHI }  
This is to certify that the foregoing plat was filed in the Office of the Recorder of Lemhi County, Idaho on this 13<sup>th</sup> day of May, 1976, at 9:25 A. M. and duly recorded in Plat Book 4 at Page 55-2.

*Eleanor Aldous*  
EX-OFFICIO RECORDER

johnston · couch  
engineers · surveyors  
salmon · idaho