

COUNTY COMMISSIONER'S ACCEPTANCE

The foregoing plat was duly accepted and approved and maintenance of all public streets was accepted by the Board of County Commissioners of the County of Lemhi, Idaho on this 9 day of August 1976.

Eleanor Aldous
ATTEST: CLERK

Charles B. Kane
CHAIRMAN

134929

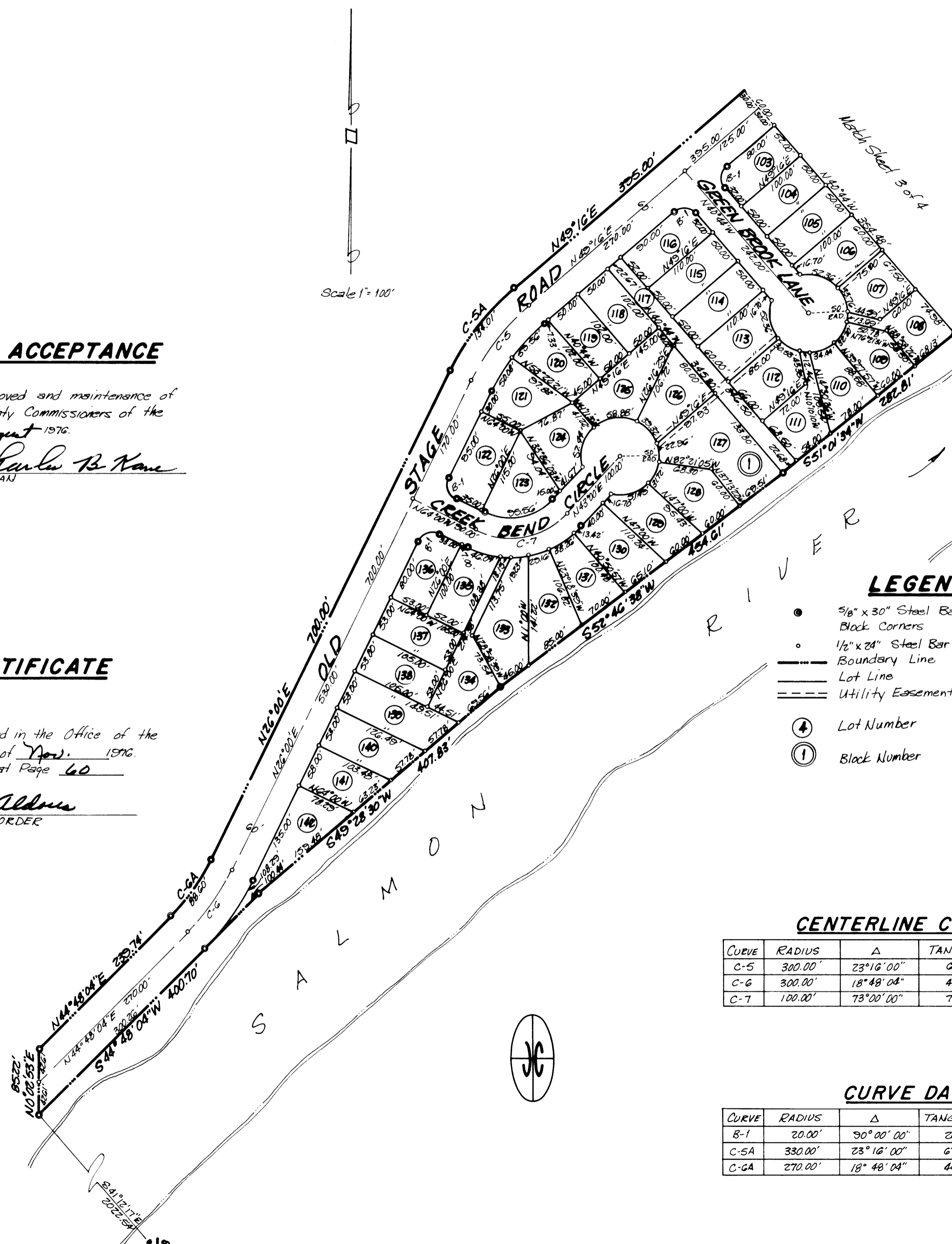
COUNTY RECORDER'S CERTIFICATE

STATE OF IDAHO } S.S.
COUNTY OF LEMHI }

This is to certify that the foregoing plat was filed in the Office of the Recorder of Lemhi County, Idaho on this 3rd day of Nov. 1976 at 2:18 P.M. and duly recorded in Plat Book 4 at Page 60

Eleanor Aldous
EX-OFICIO RECORDER

Scale 1" = 100'



LEGEND

- 3/8" x 30" Steel Bar set on Boundary and Block Corners
- 1/2" x 24" Steel Bar set on Lot Corners
- Boundary Line
- Lot Line
- - - Utility Easement - 5' wide
- ④ Lot Number
- ① Block Number

CENTERLINE CURVE DATA

CURVE	RADIUS	Δ	TANGENT	LENGTH	CHORD
C-5	300.00'	23°16'00"	61.76'	121.82'	120.98'
C-6	300.00'	18°48'04"	49.67'	98.44'	98.00'
C-7	100.00'	73°00'00"	74.00'	127.41'	118.86'

CURVE DATA

CURVE	RADIUS	Δ	TANGENT	LENGTH	CHORD
B-1	20.00'	90°00'00"	20.00'	31.42'	28.28'
C-5A	330.00'	23°16'00"	67.84'	134.01'	133.05'
C-GA	270.00'	18°48'04"	44.70'	88.00'	88.20'