

136700
COUNTY RECORDER'S CERTIFICATE

STATE OF IDAHO } ss.
 COUNTY OF LEMHI }
 This is to certify that the foregoing plat was filed in the Office of the Recorder of Lemhi County, Idaho on the 10 day of June 1977 at 3:10 P. M. and duly recorded in the Plat Book 4 at Page 66-1.

Eleanor Aldous
 EX-OFFICIO RECORDER

CENTERLINE CURVE DATA

CURVE	Δ	RADIUS	TANGENT	LENGTH	CHORD
C-1	82°05'07"	47.70'	41.53'	68.34'	62.64'
C-2	33°46'30"	185.28'	67.00'	128.58'	126.01'
C-3	51°18'37"	65.00'	31.22'	58.21'	56.28'
C-3A	33°25'11"	65.00'	19.51'	37.91'	37.38'
C-3B	17°53'26"	65.00'	10.23'	20.21'	20.30'
C-4	21°08'07"	134.00'	25.00'	49.43'	49.15'
C-5	20°21'41"	167.06'	30.00'	59.37'	59.06'
C-6	67°31'14"	336.61'	225.00'	396.68'	374.12'
C-7	136°22'14"	48.02'	120.00'	114.30'	89.17'
C-8	34°07'54"	97.72'	30.00'	58.21'	57.36'
C-9	31°25'30"	124.41'	35.00'	68.24'	67.38'
C-10	89°37'14"	80.53'	80.00'	125.96'	113.51'

CURVE DATA

CURVE	Δ	RADIUS	TANGENT	LENGTH	CHORD
C-1A	82°05'07"	22.70'	19.76'	32.52'	29.81'
C-2A	33°46'30"	210.28'	76.04'	145.92'	143.01'
C-3C	51°18'37"	40.00'	19.21'	35.82'	34.64'
C-11	78°51'18"	51.33'	40.00'	67.96'	63.10'
C-12	52°50'06"	20.00'	9.94'	18.44'	17.80'
C-13	80°37'14"	20.00'	19.87'	31.28'	28.19'
C-14	90°22'46"	20.00'	20.13'	31.55'	28.38'

COUNTY COMMISSIONER'S ACCEPTANCE

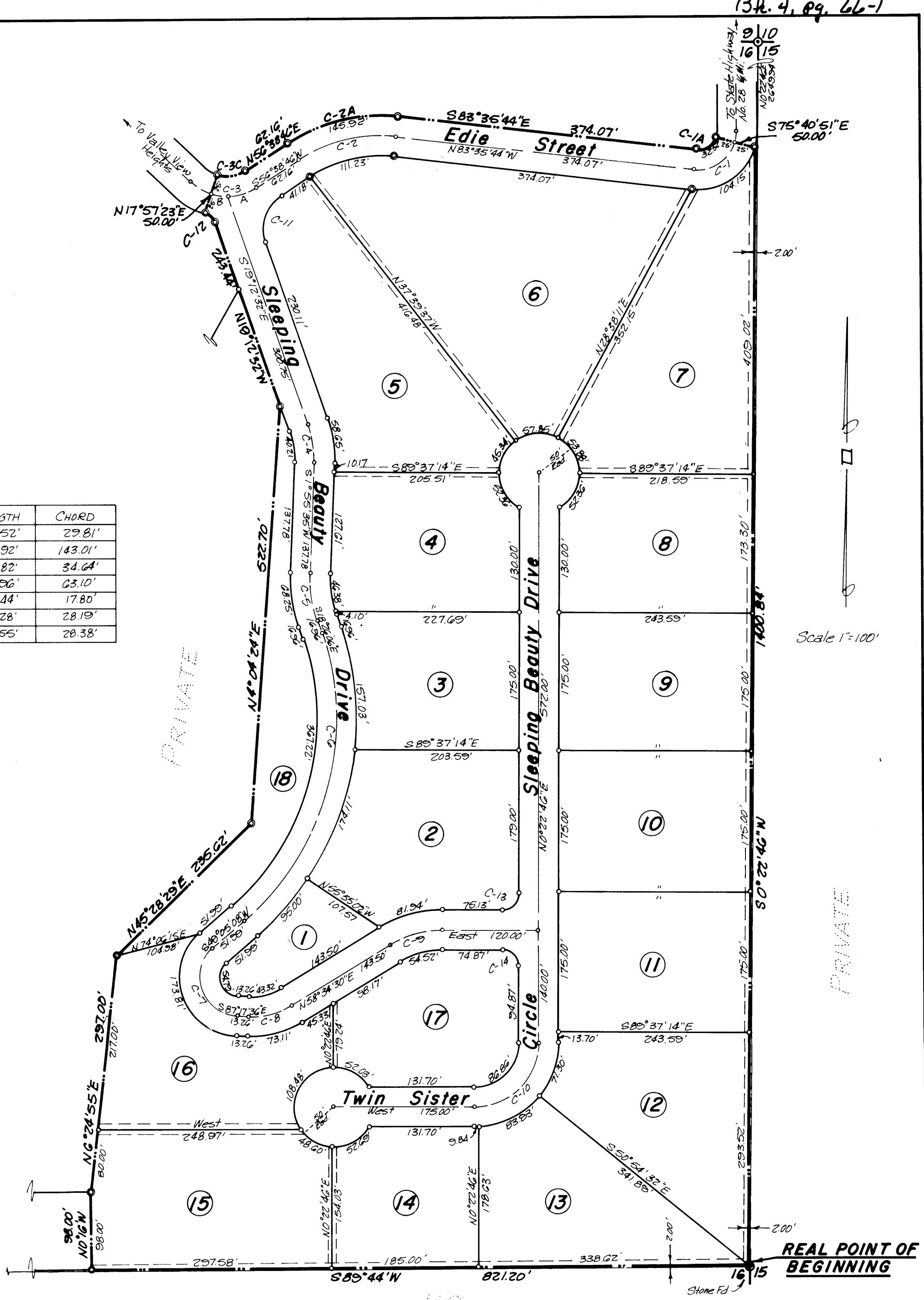
The foregoing plat was duly accepted and approved and maintenance of all public streets was accepted by the Board of County Commissioners of the County of Lemhi, Idaho on this 11th day of April 1977.

Eleanor Aldous ATTEST: CLERK
Jack Weigand CHAIRMAN

LEGEND

- 5/8" x 30" Steel Bar w/ Plastic Cap set on Boundary and Block Corners
- 1/2" x 24" Steel Bar w/ Plastic Cap set on Lot Corners
- Boundary Line
- Lot Line
- Section / Quarter Line
- Utility Easement - 5' wide
- ② Lot Number

johnston · couch
 engineers · surveyors
 salmon · idaho



Scale 1"=100'